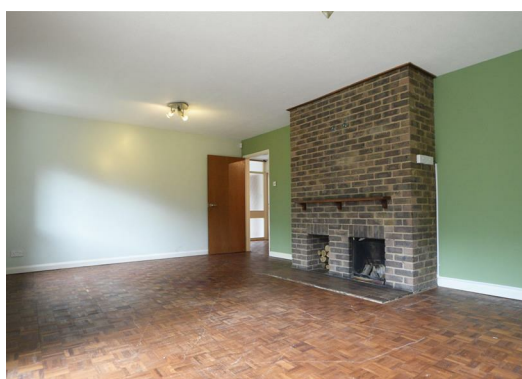




**All Saints Vicarage All Saints Lane,  
Bexhill-On-Sea, East Sussex TN39 5HA  
£1,375 Per Month**

Large Detached 4 Bedroom House, located on a private drive to the side of Sidley Church. Generous accommodation within walking distance to local amenities and schools. Available for a short term let. EPC Rating: C. COUNCIL TAX BAND E

Accommodation comprises: Entrance Porch, Office/Double Bedroom, Entrance Hall, WC, Lounge with parquet flooring and access to decking in rear garden, Kitchen, utility Room, Dining Room/Bedroom. Stairs up to Double Bedroom with storage, Double Bedroom with vanity area, WC, Bathroom with shower over, Double Bedroom with storage, Single Bedroom with vanity area. There is also ample eaves storage to this property, and a driveway with detached garage Large Gardens to the rear. Terms: £1,375.00 deposit. 1st months rent of £1,375.00 in advance. In order to proceed with an application, a holding deposit equivalent to one weeks rent will be required to hold the property whilst references are being obtained. This will be taken off of your first months rent on move in upon successful completion of the referencing process. Please contact a member of staff for further details. For more information or to book a viewing, please call (01424) 446916 / 430011. We are members of The Property Ombudsman Scheme (D02464) and CMP (client money protect scheme CMP002697)



**Reception**  
Lounge (Lounge)

**Reception**  
Office/Bedroom (Office/Bedroom)

**Reception**  
Dining Room (Dining Room)

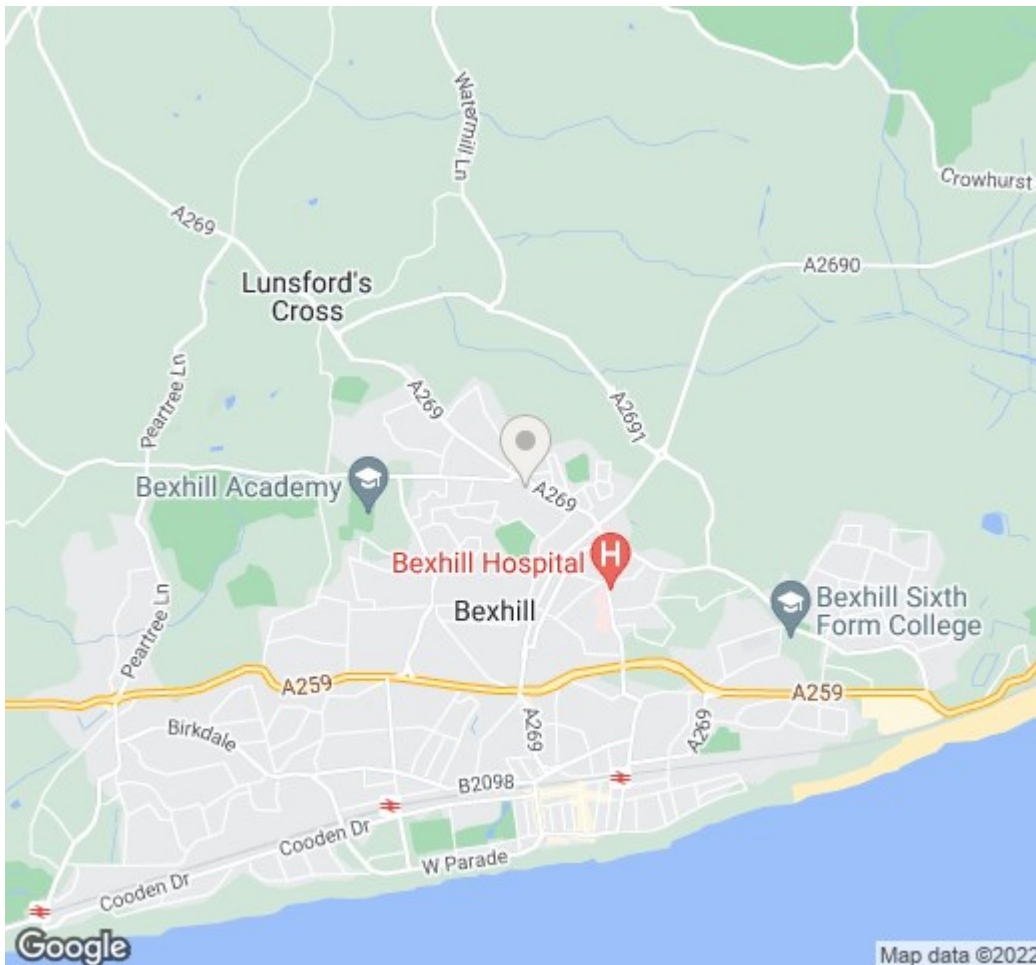
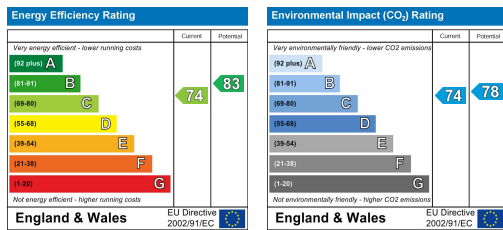
**Bedroom**  
Double (Double)

**Bedroom**  
Double (Double)

**Bedroom**  
Double (Double)

**Bedroom**  
Single (Single)

**Kitchen**



**RUSH  
WITT &  
WILSON**



1 Bexhill Road  
St.Leonards-on-Sea  
East Sussex  
TN38 0AH  
Tel: 01424 430011  
lettings@rushwittwilson.co.uk  
www.rushwittwilson.co.uk